



22 Odessa Park Gloucester Road, Tewkesbury, GL20 7DA

£90,000

CHOSEN
ESTATE AGENTS

THE PROPERTY

Situated within the tranquil and well-regarded Odessa Park in Tewkesbury, this two-bedroom park home offers a fantastic opportunity for those seeking a peaceful lifestyle with all the comforts of home.

Step inside to discover a bright and welcoming layout, thoughtfully designed to make the most of the available space. The accommodation comprises a spacious living room with ample natural light, leading through to a well-equipped kitchen offering plenty of worktop and storage space — ideal for everyday living or entertaining.

The main bedroom is generously proportioned and benefits from beautiful views across the surrounding greenery, creating a serene retreat. The second bedroom, while compact, is suitable for a single bed or would work best as a home office or hobby room. A modern shower room completes the interior, along with a central hallway for easy flow throughout the home.

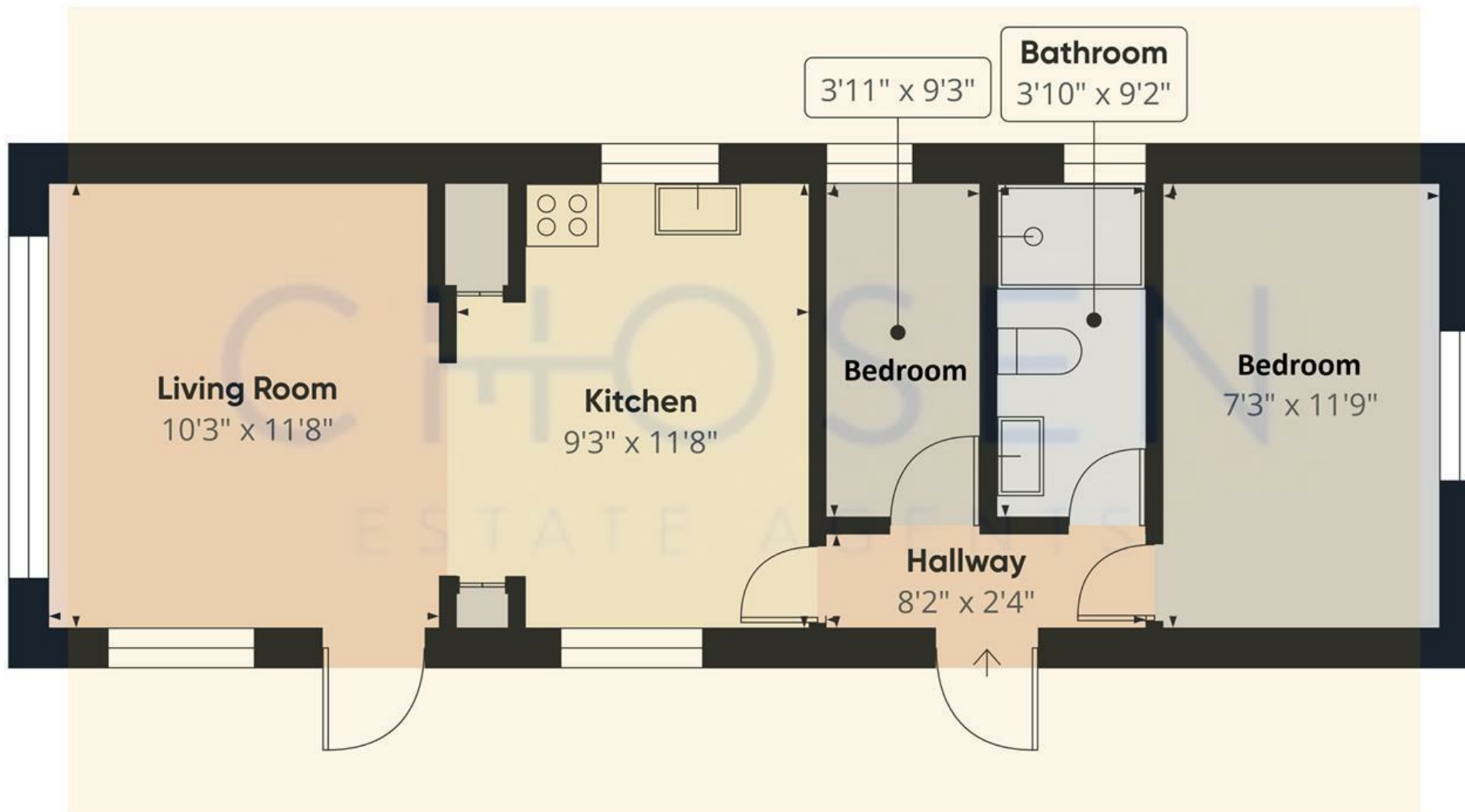
Externally, the home boasts a private off-road parking space, a low-maintenance garden, and a useful outbuilding providing additional storage. The garden space is perfect for enjoying a morning coffee or simply taking in the peaceful surroundings.

This home is ideal for those looking to downsize or to enjoy a quieter pace of life.

- 2 Bedrooms (one double, one single/study)
- Light-filled living room and spacious kitchen
- Shower room with modern fittings
- Off-road parking
- Private garden with outbuilding
- Stunning views
- Quiet, well-kept park location
- Council Tax Band - A

Agents Note
Pitch Fee: £152.81 per month payable to site owner.
Council Tax Band: A
EPC Rating: Exempt
Mains Gas, Electric and Water are connected.
Over 50's complex.





Approximate total area⁽¹⁾
406 ft²

(1) Excluding balconies and terraces

Calculations reference the RICS IPMS 3C standard. Measurements are approximate and not to scale. This floor plan is intended for illustration only.

GIRAFFE360